

PROJECT 11647  
 JOB NAME SAMMET THEATRE REV 2  
 TBT96  
 TUKIT  
 FLAT96  
 FXS.BM

All dimensions size designations given are subject to verification on job site and adjustment to fit job conditions. ~ KM ~



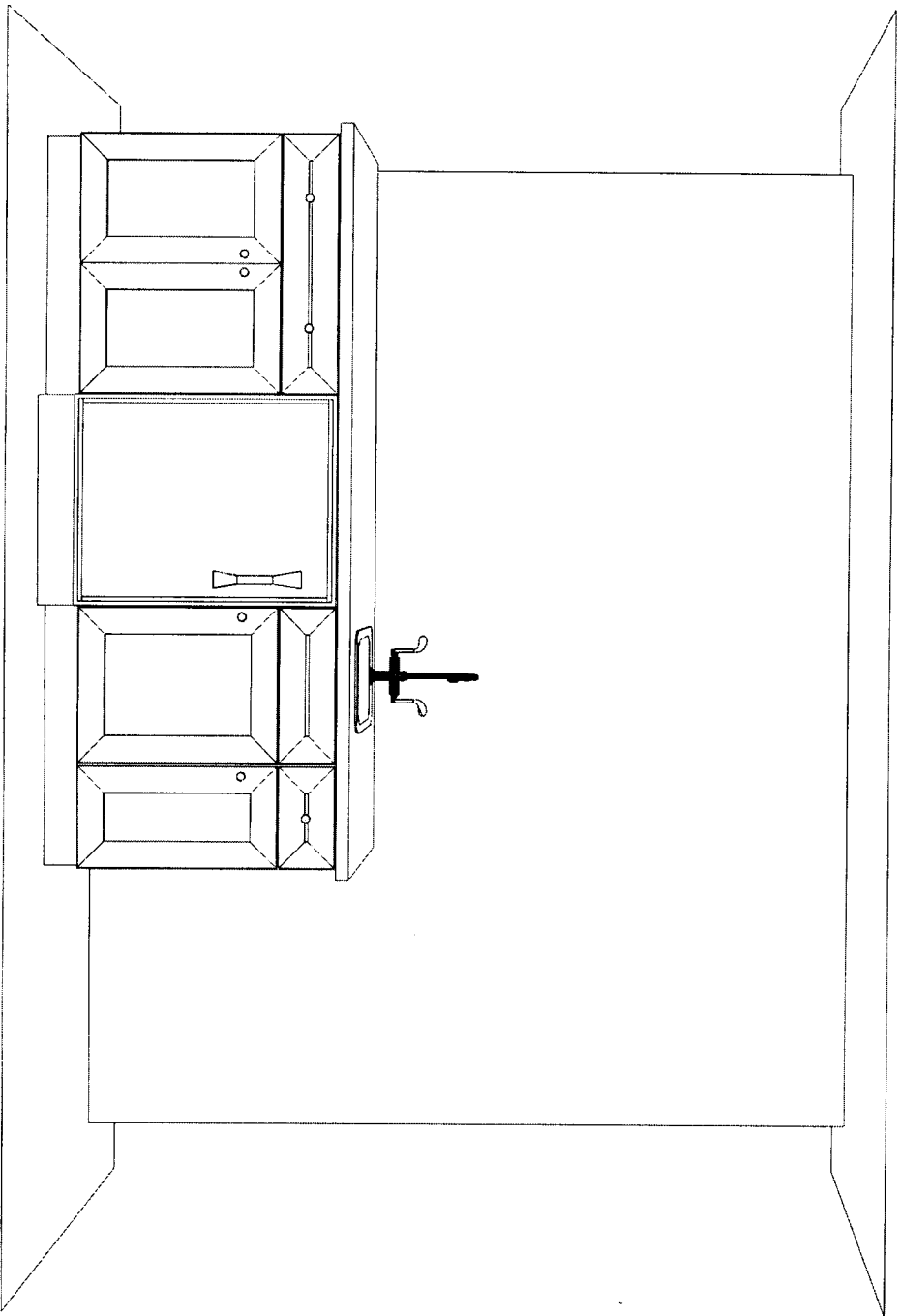
This is an original design and must not be released or copied unless applicable fee has been paid or job order placed. ~ KM ~

Designed: 10/22/2012  
 Printed: 10/22/2012

SAMMET THEATRE REV 2.kit

All

Drawing #: 1 No Scale.



Note: This drawing is an artistic interpretation of the general appearance of the design. It is not meant to be an exact rendition.  
~ KM ~

SAMMET THEATRE REV 2.kit

2020  
TECHNOLOGIES

Designed: 10/22/2012  
Printed: 10/22/2012

All

Drawing #: 1

120"

96"

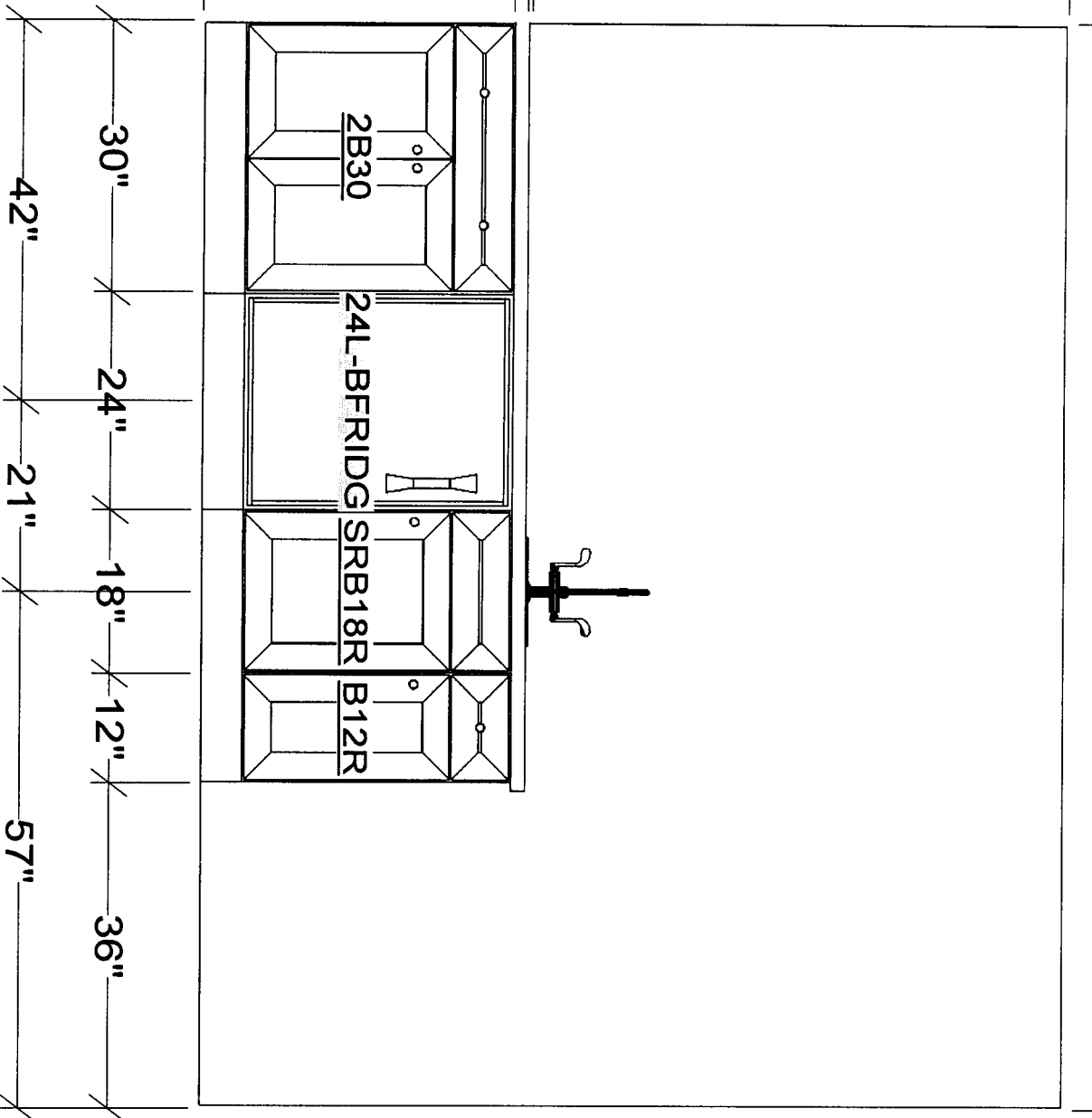
59 1/2"

61 1/2"

36"

34 1/2"

1"



All dimensions size designations given are subject to verification on job site and adjustment to fit job conditions. ~ KM ~



This is an original design and must not be released or copied unless applicable fee has been paid or job order placed. ~ KM ~

Designed: 10/22/2012  
Printed: 10/22/2012

SAMMET THEATRE REV 2.kit

E1 1

Drawing #: 1 No Scale.